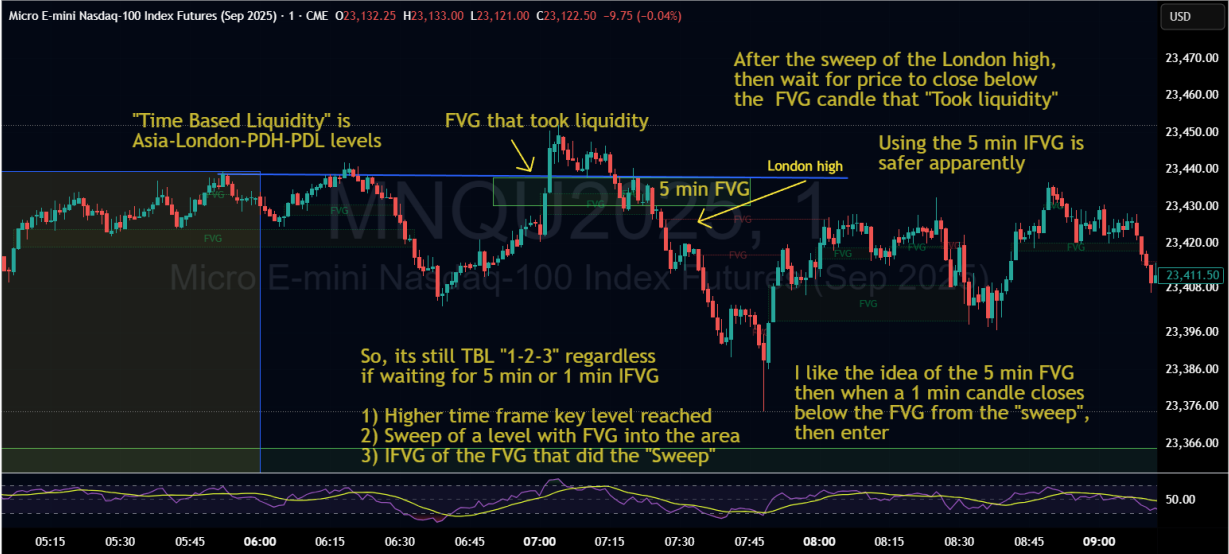


Peace. Here are thoughts on “Before Market Open” if U dig...

4 hour for FVG and 15 minute charts for “1-2-3” (**FVG return, Sweep, and IFVG of FVG that swept the near term level**)

1 hour for FVG and 15 or 5 minute charts for “1-2-3” (**FVG return, Sweep, and IFVG of FVG that swept the near term level**)





TradingView



TradingView

