

Peace – Here is a description and charts to explain the “Process is the Peace” flow for the **“Universal MFB – Flow/Sweep/FVG-123 Setup”** indicator.

The “Universal MFB” works well with the **“Momentum Flow Build w/FVG v6 (clean)”** indicator that already draws Key levels:

<https://www.tradingview.com/script/mWKQLNL8-Momentum-Flow-Build-w-FVG-v6-Clean/>

Use both indicators on the charts.

The High Probability time windows for trading this strategy, is:

NY Morning (10-11 AM), and NY Afternoon (2-3 PM), London Open (3-4 AM).

Here is the idea:

- 1) **“WHERE?”** - 5 min candle closure at key level – Purple “Intention dot” on 5 min chart prints.
- 2) **“WHEN?”** - 1 min FVG-123 or “Ch’d” signal (Yellow arrows, and Green/Red Diamonds)

“Ch’d” is a combination of both “ChoCh – Change in Character” when price breaks a recent high or low pivot, and “CISD – Change in the State of Delivery” is when price closes above/below and FVG.

An “FVG-123” is when:

- 1) FVG prints
- 2) a retrace
- 3) then closure outside the FVG signaling continuation intention.

Why combine indicators and signals? Because often a signal alone creates false signals.

A **Yellow arrow prints** when there is an **FVG-123**.

Green or Red Diamonds print when there is a **“Ch’d”** signal near a key level.

The 5 min candle closure **“Intention Dots”** indicates a “Momentum Change” at a Key level, and only appear on the **5 min chart** (HTF – Bird’s Eye View or Higher Time Frame)

The **“Ch’d” signals** only prints on the **1 min chart** (LTF - Lower Time Frame view for trade entry).

Here are Risk Management rules:

Risk Management, Stop Loss:

Stop placed above/below the 5 min “closure” candle plus 3 to 5 points.

Move stop to Breakeven (when) – B.O.S. – Break of Near Term Structure - and FVG respect (“Protected FVG” is if energetic candles and retrace to FVG), **Trail** – Any “Protected FVGs”, **Adjust** - if price reaches a key level, then move stop loss to the previous candle to the level, or nearest FVG.

Here are some charts to explain the Process Flow.

Patience is the EDGE. The Process is the win.

Don’t chase price, the market will be there, **Breathe - Let it ride – Peace.**

Peacethruprocess created with TradingView.com, Apr 02, 2026 23:57 UTC-4



TradingView

Peacethruprocess created with TradingView.com, Apr 02, 2026 23:58 UTC-4



TradingView

Peacethruprocess created with TradingView.com, Apr 03, 2026 00:00 UTC-4



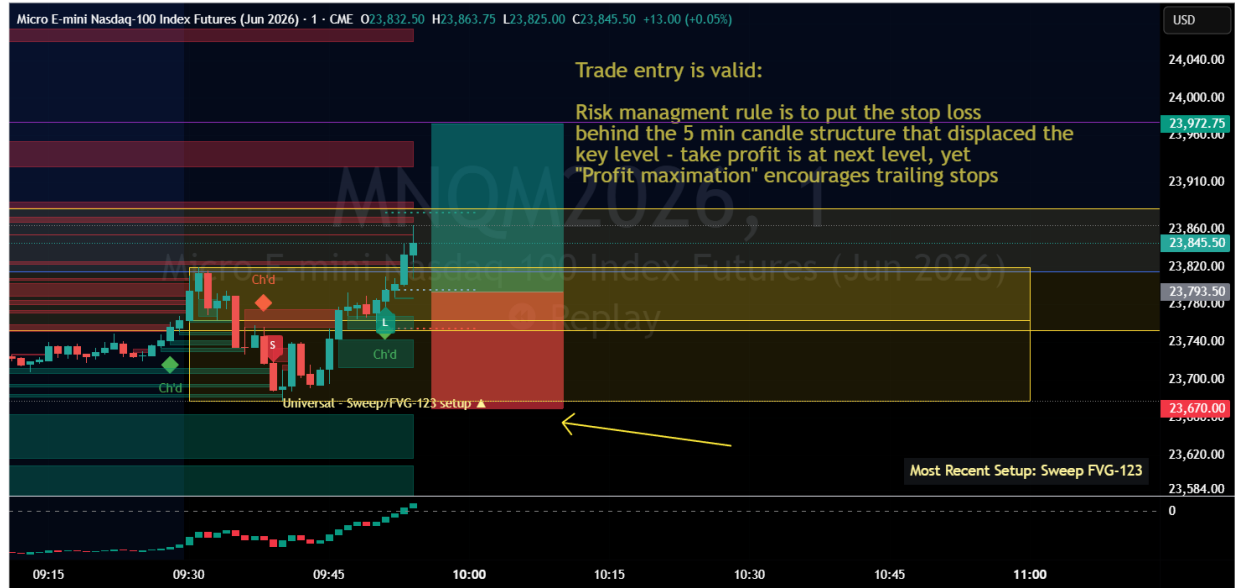
TradingView

Peacethruprocess created with TradingView.com, Apr 03, 2026 00:02 UTC-4



TradingView

Peacethruprocess created with TradingView.com, Apr 03, 2026 00:04 UTC-4



TradingView

Peacethruprocess created with TradingView.com, Apr 03, 2026 00:06 UTC-4



TradingView

Peacethrprocess created with TradingView.com, Apr 03, 2026 00:11 UTC-4



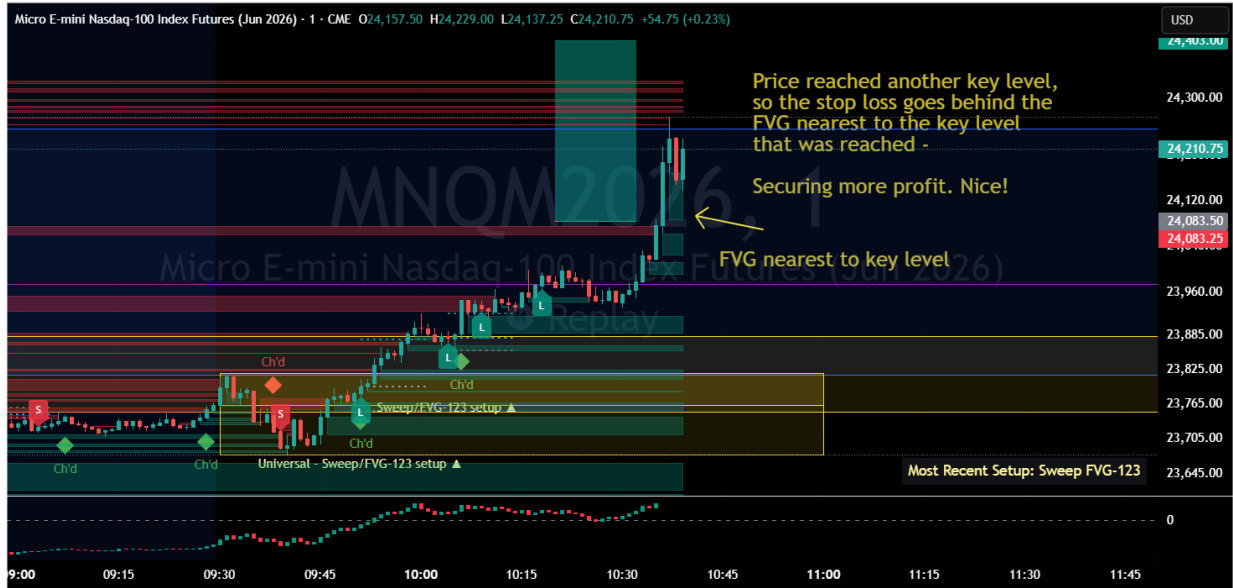
TradingView

Peacethrprocess created with TradingView.com, Apr 03, 2026 00:12 UTC-4



TradingView

Peacethruprocess created with TradingView.com, Apr 03, 2026 00:15 UTC-4



TradingView

Peacethruprocess created with TradingView.com, Apr 03, 2026 00:17 UTC-4



TradingView

Peace -